

# Wynnum - Manly

SA3 Population Health  
Snapshot 2023

73,033



## Demographics<sub>1</sub>

people living in this region in 2021

83 km<sup>2</sup>

Age	First Nations		Non Indigenous		Not Stated		Total
	Count	% of Age group	Count	% of Age group	Count	% of Age group	
0-4	203	4.5%	4,204	93.0%	113	2.5%	4,520
5-14	378	3.7%	9,425	93.2%	306	3.0%	10,109
15-24	341	4.2%	7,495	93.0%	226	2.8%	8,062
25-44	489	2.5%	18,381	94.2%	634	3.3%	19,504
45-64	410	2.1%	18,616	95.1%	548	2.8%	19,574
65+	130	1.2%	10,644	94.5%	490	4.4%	11,264
<b>Total pop</b>	<b>1,951</b>	<b>2.7%</b>	<b>68,765</b>	<b>94.2%</b>	<b>2,317</b>	<b>3.2%</b>	

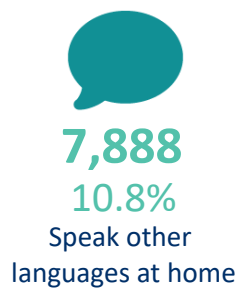
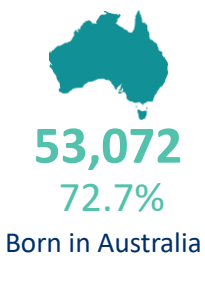
**Male**  
35,608 48.8%

**Female**  
37,434 51.3%

(Approximates)

## Priority Populations<sub>1</sub>

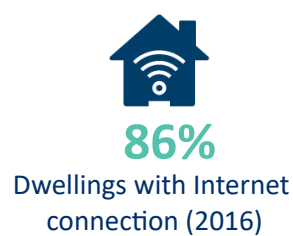
### Top 5 Ancestries



Ancestry	Count
English	30,592
Australian	24,735
Irish	9,886
Scottish	8,738
German	4,267



## Social determinants<sub>2,1</sub>



Education	Eligible respondents	% respondents
Didn't go to school	182	0%
Yr10 or below	15,437	28%
Yr11/equiv	4,095	7%
Yr12/equiv	36,099	65%

Higher education	Eligible respondents	% respondents
Cert I/II/nfd	1,815	5%
Cert III/IV	10,653	31%
Advanced Diploma/Diploma	6,300	18%
Grad Diploma/Certificate	1,711	5%
Bachelor Degree	10,768	31%
Post Grad Degree	3,216	9%

## Medians (middle of the group)<sub>1</sub>

**39yrs**  
Age

**\$949**  
Weekly personal  
income

**\$2,460**  
Weekly family  
income

**\$2,100**  
Weekly household  
income

**\$2,100**  
Monthly  
mortgage  
repayments

**\$420**  
Weekly rent

# Wynnum - Manly

SA3 Population Health  
Snapshot 2023

**73,033**  
people living in this region in 2021



## Vulnerable children<sub>3</sub>

Australian Early Developmental Census

**58%**

children developmentally on track

**11%**

children vulnerable in 2 or more domains

**11%**

children vulnerable: physical health & wellbeing domain

**7%**

children vulnerable: language & cognitive skills domain

**10%**

children vulnerable: social competence domain

## Self-reported long term health conditions<sub>1</sub>

Health Condition	First Nations		Non Indigenous		Not Stated		Total	
	Count	%	Count	%	Count	%	Count	%
Arthritis	153	7.8%	5,999	8.7%	45	1.9%	<b>6,197</b>	<b>8.5%</b>
Asthma	273	14.0%	6,022	8.8%	12	0.5%	<b>6,307</b>	<b>8.6%</b>
Cancer	39	2.0%	2,342	3.4%	15	0.6%	<b>2,396</b>	<b>3.3%</b>
Dementia	6	0.3%	424	0.6%	12	0.5%	<b>442</b>	<b>0.6%</b>
Diabetes	127	6.5%	2,943	4.3%	16	0.7%	<b>3,086</b>	<b>4.2%</b>
Heart Disease	76	3.9%	2,908	4.2%	28	1.2%	<b>3,012</b>	<b>4.1%</b>
Kidney Disease	17	0.9%	545	0.8%	10	0.4%	<b>572</b>	<b>0.8%</b>
Lung Condition	68	3.5%	1,310	1.9%	15	0.6%	<b>1,393</b>	<b>1.9%</b>
Mental Health Cond	306	15.7%	6,675	9.7%	36	1.6%	<b>7,017</b>	<b>9.6%</b>
Stroke	21	1.1%	611	0.9%	7	0.3%	<b>639</b>	<b>0.9%</b>
Other	175	9.0%	6,267	9.1%	31	1.3%	<b>6,473</b>	<b>8.9%</b>
None	1,106	56.7%	43,040	62.6%	108	4.7%	<b>44,254</b>	<b>60.6%</b>
Not Stated	95	4.9%	2,299	3.3%	2,092	90.3%	<b>4,486</b>	<b>6.1%</b>

First Nations  
**750**  
**38%**

Non Indigenous  
**23,426**  
**34%**

Not Stated  
**117**  
**5%**

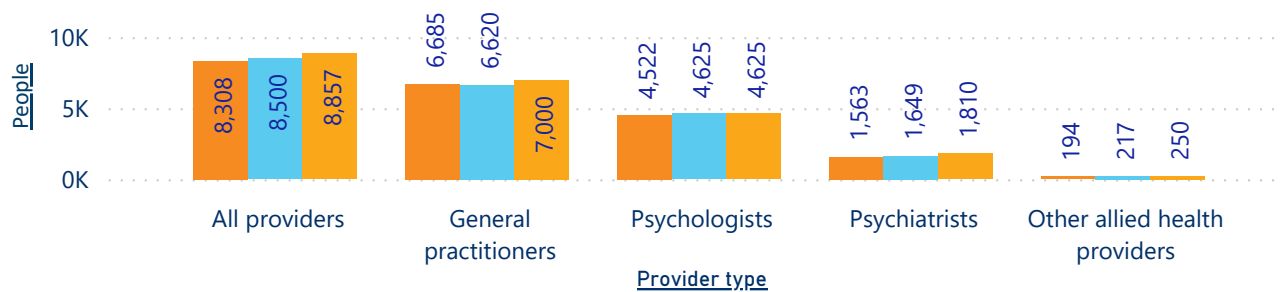
People with 1 or more health conditions

Note not additive across health conditions as people could multi select these in the census

## Mental health<sub>4</sub>

### People receiving Medicare-subsidised mental health-specific services

Fin Yr ● 2018-19 ● 2019-20 ● 2020-21



### Total services delivered

Fin Yr	#
2018-19	43,545
2019-20	43,799
2020-21	47,175

## Death - Top 3 causes of death<sub>5</sub>

Crude rate per 100,000

1. Coronary heart disease(86.2)
2. Dementia(40.5)
3. Cerebrovascular disease(40)

SOURCES: 1 ABS 2021 Census, Datapacks, retrieved 01/12/22, <www.abs.gov.au/census/find-census-data/datapacks>, 2 Queensland Government Statistician's Office, Regional Database, retrieved 5/12/22, <www.qgso.qld.au> | 3 Australian Early Developmental Census, Data, retrieved 5/12/22, <www.aedc.gov.au/early-childhood> | 4 AIHW, Medicare-subsidised mental health specific services, retrieved 5/12/22, <www.aihw.gov.au/mental-health/topic-areas/medicare-subsidised-services> | 5 AIHW, MORT Death data 2016-20, retrieved 10/10/22, <www.aihw.gov.au>

Note -The ABS data captured in this report presents people as Male or Female, despite the census allowing for non-binary responses. Further information in how this was collected in the census and consequently provided can be found at [www.abs.gov.au/articles/non-binary-sex-2021-census](http://www.abs.gov.au/articles/non-binary-sex-2021-census)