

THE REFUGEE HEALTH JOURNEY IN PRIMARY CARE

RECENT CHANGES AND TIPS FOR CLINICIANS WORKING WITH FAMILIES FROM REFUGEE BACKGROUNDS

The Refugee Health Network Queensland's GP Fellow, Dr Rachel Claydon, and Medeco Inala's GP, Dr Deborah Hillman-White along with guest speakers will provide an overview of the refugee health and settlement journey including recommendations and updates to health screening, practice tips, providing trauma informed care and how to access support for patients in primary care.

A Panel Q&A will enable all speakers to demonstrate how their services work with people arriving from refugee backgrounds and with health care providers.

We will also have the opportunity to hear from community members who will provide cultural and community perspectives on health and health care access for new arrivals.

Guest Speakers: Dr Rachel Claydon, Dr Deborah Hillman-White, Dr Rebecca Farley (Clinical Director Mater Refugee Complex Care Clinic, BNPHN Clinical Lead Refugee Health) and representatives from the Mater Refugee Health Advisory Group (known as the "G11"), Metro South Refugee Health Service and Multicultural Australia.

Date: **Wednesday 25 June 2025**

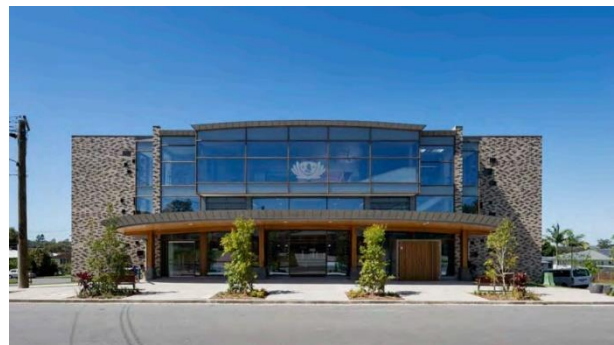
Venue: Tzu Chi Community Centre
60 Rosebank Square, Salisbury ([venue map](#)).
Onsite parking available OR attend online via Microsoft Teams

Time: From 5pm for registration
5:30pm for dinner
6-8pm for the education event

RSVP: **10 June 2025** for catering purposes

Cost: Free

Registration: [Face to Face](#) meeting OR [Online](#) attendance



For more information about this event please email multicultural@bsphn.org.au

If after registering, you are unable to attend this event, please notify the organiser at your earliest convenience.