

Market Briefing

Community Wellbeing Grants Initiative – Jimboomba & Surrounds

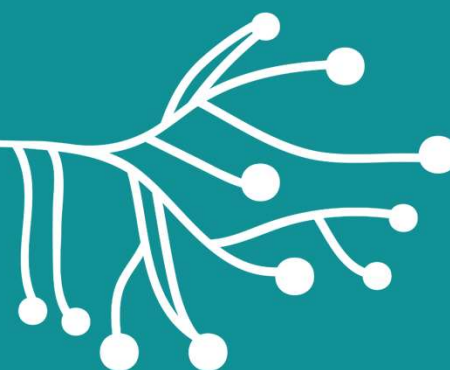
Baugull nyungai Gurumba bigi Maroomba biggee

We acknowledge the Traditional Custodians of the land on which we live and work, and of the many different nations across Australia.

We pay our respects to the Elders, past, present and emerging, as the holders of the memories, the traditions, the culture and the spiritual wellbeing of the Aboriginal and Torres Strait Islander peoples across the nation.



Background



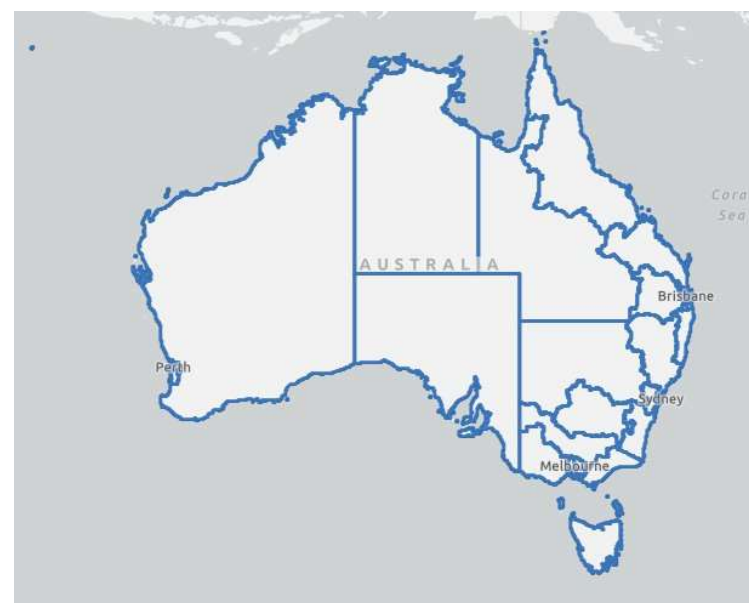
Primary Health Networks (PHNs)

Independent organisations funded by the Department of Health and Aged Care to manage health regions.

31 PHN regions which closely align with state and territory local hospital networks.

Roles:

- Assess the health needs of their region using a people-centred approach.
- Commission health services to meet the prioritised health needs of the people in their region.
- Work closely with providers to build health workforce capacity and ensure they deliver high-quality care.
- Connect health services for people to encourage better use of health resources and avoid duplication.



[What Primary Health Networks are | Australian Government Department of Health and Aged Care](#)

[Primary Health Network \(PHN\) locator map | Australian Government Department of Health and Aged Care](#)



Brisbane South PHN:



The Brisbane South PHN region is predominately a metropolitan region with pockets of rural (Beaudesert) and remote (Bay Islands) areas

Our key objectives are:

- to increase the efficiency and effectiveness of medical and mental health services, particularly for those most vulnerable in the community
- to improve coordination of care ensuring individuals receive the right care in the right place at the right time.

We do this through a commissioning approach. Our efforts focus on improving the system for everyone – individuals, families, communities, health professionals, key stakeholders and the primary health sector

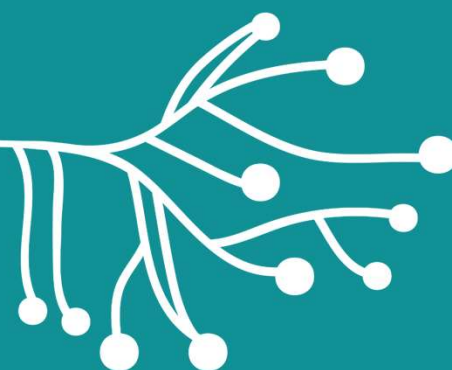


Context

- Jimboomba and surrounding areas are a growing region, with a 72% projected growth by 2036.
- Local feedback indicates that the community would benefit from greater access to mental health and wellbeing supports
- BSPHN has identified the need to support community-led mental health and wellbeing initiatives within the region



Overview



Grants Amount & Delivery

- Grants of \$20,000 are available:
 - Can apply for any amount- does not need to be for the entire funding
 - Collaborations are encouraged
- Anticipated delivery start date: 1 July 2025
 - 30 June 2026 – grant activity completed
 - 31 August 2026 – grant activity reporting submitted to Brisbane South PHN (including an income and expenditure statement for the acquittal of the grant funds)



Service Specifications

Priority Locations

The priority geographic locations have been identified as Jimboomba, Beaudesert and Flagstone. However this extends to:

- Cedar Grove
- Cryna
- Gleneagle
- Hillview
- Kooralbyn
- Rathdowney



Service Specifications

Priority populations

Priority populations have been selected based on the Joint Regional Needs Assessment (2024-2027) and the Brisbane South PHN after hours needs assessment (2024). Priority populations include:

- Aboriginal Torres Strait Islander people
- people of culturally and linguistically diverse (CALD) backgrounds
- people with disability
- youth (15 to 24 years of age)
- people who identify as LGBTIQ+
- people experiencing homelessness
- women
- victim-survivors of domestic family and sexual violence
- people who were formerly incarcerated
- people with chronic health conditions
- parents/carers of children 0 to 4 years old
- older people
- people living in rural/remote regions.



Intended outcomes/objectives

This grant provides the opportunity for local groups to design programs or initiatives that are culturally relevant, accessible, and effective in improving mental health outcomes locally.

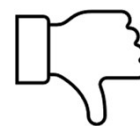
- increase mental health awareness
- support in reducing mental health stigma
- promote the mental health and wellbeing of the local community
- increase awareness of local services and pathways to accessing support
- engage with the community to design effective, culturally safe, community-led mental health service



What can the project include or not include?



- Program delivery
- Awareness & promotion campaigns
- Education & training
- Cultural identity
- Service navigation support



- Solely acquiring a resource/s
- Targeted towards community members from outside the specified region
- Gifts & Lending
- Organisational Fees

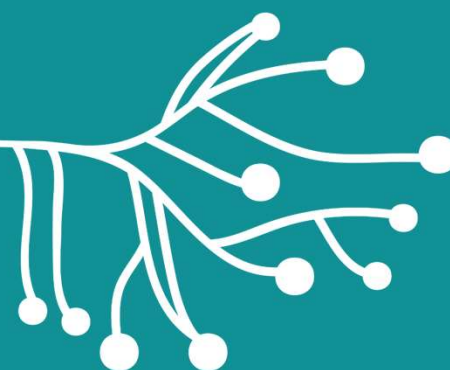


Performance, reporting and evaluation

- Successful applicants will be required to provide outcome reporting upon completion of the project.
- Information required for this reporting will include:
 - Expenditure of grant funding (financial acquittal)
 - Impact on community
 - How impact was determined



Criteria

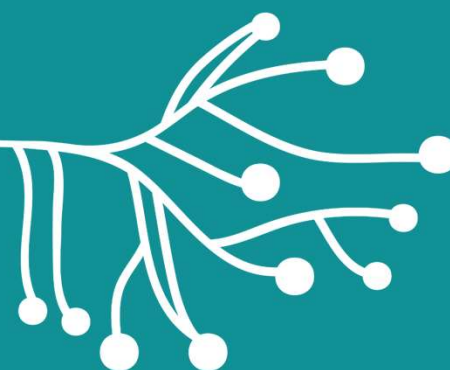


Weighted Criteria

Criteria	Description	Weighting
1. Objectives	How well the proposed activity aligns with the grant objectives (e.g., improving mental health and wellbeing)	30%
2. Innovation and Community Engagement	Level of innovation in the approach and strength of proposed community engagement	30%
3. Feasibility and Implementation Plan	The clarity, feasibility, and sustainability of the project plan, including timeline and deliverables	20%
4. Target Population Focus	Degree to which the proposal targets priority populations in the identified location	10%
5. Budget and Cost-Effectiveness	Clear and justified budget, demonstrating cost-effectiveness and efficient use of funds	10%



Timeframes

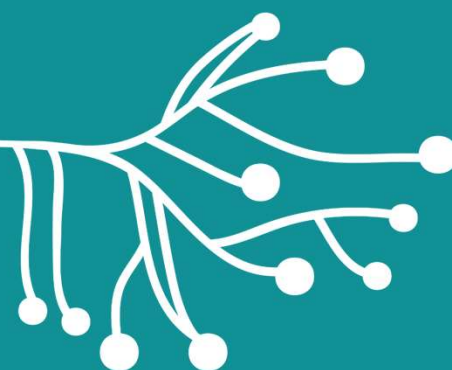


Important Dates

Stage	Date
Grant Applications open	Wednesday 9 April 2025
Community Information Session	Thursday 24 April 2025
Grant applications close	Friday 16 May 2025 5pm AEST
Outcome notifications sent out	Friday 30 May 2025
Funded project or program begins	Tuesday 1 July 2025
Grant activity completed	Tuesday 30 June 2026
Grant activity reporting due	Monday 31 August 2026



Submission

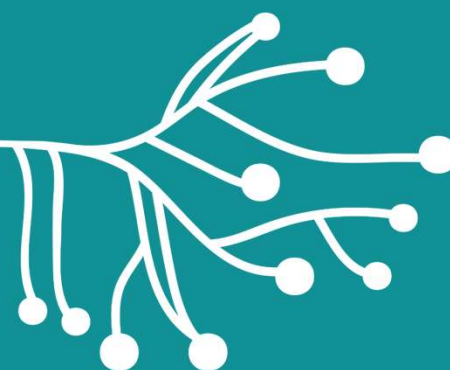


How to Submit your Application

- Applications close 16 May 5pm **(AEST)**
- Download the grant guidelines from BSPHN's Grants & EOI's page
- Complete the grant application form and New Supplier Form.
- Submit completed applications to tenders@bsphn.org.au.



Questions





An Australian Government Initiative

Building 20, Garden City Office Park
2404 Logan Road, Eight Mile Plains QLD 4113
PO BOX 6435, Upper Mt Gravatt QLD 4122

T: 3864 7555 | F: 3864 7599 | bsphn.org.au

BETTER SYSTEM, BETTER HEALTH