

Cleveland - Stradbroke

SA3 Population Health
Snapshot 2023

93,387



Demographics₁

people living in this region in 2021

481 km²

Age	First Nations		Non Indigenous		Not Stated		Total
	Count	% of Age group	Count	% of Age group	Count	% of Age group	
0-4	288	6.3%	4,141	91.0%	120	2.6%	4,549
5-14	604	5.2%	10,664	91.9%	335	2.9%	11,603
15-24	441	4.2%	9,841	92.8%	318	3.0%	10,600
25-44	573	3.0%	18,199	93.7%	641	3.3%	19,413
45-64	544	2.1%	24,542	94.5%	888	3.4%	25,974
65+	241	1.1%	20,266	95.4%	741	3.5%	21,248
Total pop	2,691	2.9%	87,653	93.9%	3,043	3.3%	

Male
45,419 48.6%

Female
47,967 51.4%

(Approximates)

Priority Populations₁

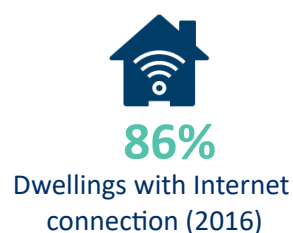
Top 5 Ancestries



Ancestry	Count
English	43,257
Australian	32,550
Scottish	11,644
Irish	11,261
German	5,590



Social determinants_{2,1}



Education	Eligible respondents	% respondents
Didn't go to school	176	0%
Yr10 or below	26,096	36%
Yr11/equiv	6,243	8%
Yr12/equiv	40,966	56%

Higher education	Eligible respondents	% respondents
Cert I/II/nfd	2,695	6%
Cert III/IV	16,878	40%
Advanced Diploma/Diploma	8,954	21%
Grad Diploma/Certificate	1,611	4%
Bachelor Degree	9,802	23%
Post Grad Degree	2,687	6%

Medians (middle of the group)₁

45yrs
Age

\$760
Weekly personal
income

\$2,102
Weekly family
income

\$1,692
Weekly household
income

\$2,000
Monthly
mortgage
repayments

\$425
Weekly rent

Cleveland - Stradbroke

SA3 Population Health
Snapshot 2023

93,387
people living in this region in 2021



Vulnerable children₃

Australian Early Developmental Census

55%

children developmentally on track

11%

children vulnerable in 2 or more domains

11%

children vulnerable: physical health & wellbeing domain

7%

children vulnerable: language & cognitive skills domain

8%

children vulnerable: social competence domain

Self-reported long term health conditions₁

Health Condition	First Nations		Non Indigenous		Not Stated		Total	
	Count	%	Count	%	Count	%	Count	%
Arthritis	229	8.5%	10,152	11.6%	91	3.0%	10,472	11.2%
Asthma	386	14.3%	8,113	9.3%	44	1.4%	8,543	9.1%
Cancer	78	2.9%	3,692	4.2%	26	0.9%	3,796	4.1%
Dementia	15	0.6%	903	1.0%	15	0.5%	933	1.0%
Diabetes	148	5.5%	4,493	5.1%	37	1.2%	4,678	5.0%
Heart Disease	125	4.6%	5,007	5.7%	39	1.3%	5,171	5.5%
Kidney Disease	39	1.4%	930	1.1%	11	0.4%	980	1.0%
Lung Condition	84	3.1%	2,312	2.6%	22	0.7%	2,418	2.6%
Mental Health Cond	419	15.6%	9,056	10.3%	64	2.1%	9,539	10.2%
Stroke	23	0.9%	1,127	1.3%	17	0.6%	1,167	1.2%
Other	311	11.6%	8,998	10.3%	43	1.4%	9,352	10.0%
None	1,479	55.0%	50,506	57.6%	163	5.4%	52,148	55.8%
Not Stated	124	4.6%	3,274	3.7%	2,688	88.3%	6,086	6.5%

First Nations
1,088
40%

Non Indigenous
33,873
39%

Not Stated
192
6%

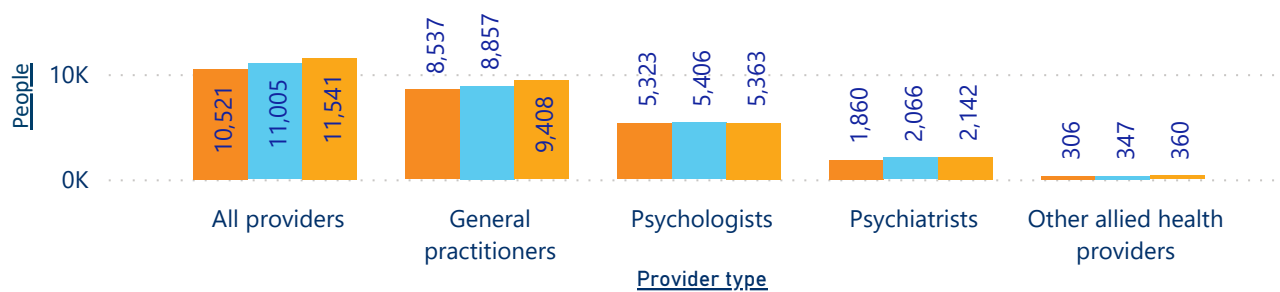
People with 1 or more health conditions

Note not additive across health conditions as people could multi select these in the census

Mental health₄

People receiving Medicare-subsidised mental health-specific services

Fin Yr ● 2018-19 ● 2019-20 ● 2020-21



Total services delivered

Fin Yr	#
2018-19	50,352
2019-20	52,399
2020-21	56,182

Death - Top 3 causes of death₅

Crude rate per 100,000

1. Coronary heart disease(87.4) 2. Dementia(66.1) 3. Cerebrovascular disease(59)

SOURCES: 1 ABS 2021 Census, Datapacks, retrieved 01/12/22, <www.abs.gov.au/census/find-census-data/datapacks>, 2 Queensland Government Statistician's Office, Regional Database, retrieved 5/12/22, <www.qgso.qld.au> | 3 Australian Early Development Census, Data, retrieved 5/12/22, <www.aedc.gov.au/early-childhood> | 4 AIHW, Medicare-subsidised mental health specific services, retrieved 5/12/22, <www.aihw.gov.au/mental-health/topic-areas/medicare-subsidised-services> | 5 AIHW, MORT Death data 2016-20, retrieved 10/10/22, <www.aihw.gov.au>

Note -The ABS data captured in this report presents people as Male or Female, despite the census allowing for non-binary responses. Further information in how this was collected in the census and consequently provided can be found at www.abs.gov.au/articles/non-binary-sex-2021-census