

Forest Lake - Oxley

SA3 Population Health
Snapshot 2023

78,721



Demographics₁

people living in this region in 2021

64 km²

Age	First Nations		Non Indigenous		Not Stated		Total
	Count	% of Age group	Count	% of Age group	Count	% of Age group	
0-4	251	4.6%	4,978	90.3%	283	5.1%	5,512
5-14	557	5.2%	9,499	89.3%	579	5.4%	10,635
15-24	580	5.4%	9,740	90.3%	469	4.3%	10,789
25-44	1,086	4.4%	22,236	91.1%	1,085	4.4%	24,407
45-64	554	3.1%	16,673	93.2%	668	3.7%	17,895
65+	158	1.7%	8,934	94.2%	391	4.1%	9,483
Total pop	3,186	4.0%	72,060	91.5%	3,475	4.4%	

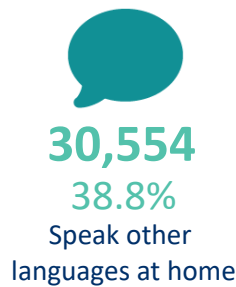
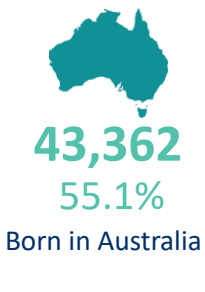
Male
39,971 50.8%

Female
38,755 49.2%

(Approximates)

Priority Populations₁

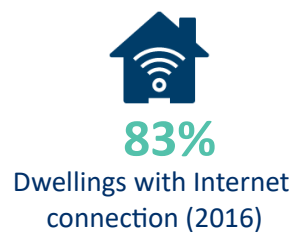
Top 5 Ancestries



Ancestry	Count
English	18,177
Australian	16,312
Vietnamese	10,563
Irish	4,669
Scottish	4,503



Social determinants_{2,1}



Education	Eligible respondents	% respondents
Didn't go to school	1,672	3%
Yr10 or below	16,960	29%
Yr11/equiv	3,915	7%
Yr12/equiv	35,931	61%

Higher education	Eligible respondents	% respondents
Cert I/II/nfd	1,854	6%
Cert III/IV	8,874	30%
Advanced Diploma/Diploma	5,215	18%
Grad Diploma/Certificate	1,138	4%
Bachelor Degree	9,054	31%
Post Grad Degree	3,018	10%

Medians (middle of the group)₁

34yrs
Age

\$691
Weekly personal
income

\$1,798
Weekly family
income

\$1,586
Weekly household
income

\$1,630
Monthly
mortgage
repayments

\$355
Weekly rent

Forest Lake - Oxley

SA3 Population Health
Snapshot 2023

78,721
people living in this region in 2021



Vulnerable children₃

Australian Early Developmental Census

48%

children developmentally on track

18%

children vulnerable in 2 or more domains

16%

children vulnerable: physical health & wellbeing domain

11%

children vulnerable: language & cognitive skills domain

11%

children vulnerable: social competence domain

Self-reported long term health conditions₁

Health Condition	First Nations		Non Indigenous		Not Stated		Total	
	Count	%	Count	%	Count	%	Count	%
Arthritis	177	5.6%	4,962	6.9%	38	1.1%	5,177	6.6%
Asthma	405	12.7%	5,646	7.8%	41	1.2%	6,092	7.7%
Cancer	49	1.5%	1,511	2.1%	14	0.4%	1,574	2.0%
Dementia	8	0.3%	497	0.7%	0	0.0%	505	0.6%
Diabetes	170	5.3%	3,841	5.3%	19	0.5%	4,030	5.1%
Heart Disease	88	2.8%	2,416	3.4%	11	0.3%	2,515	3.2%
Kidney Disease	28	0.9%	621	0.9%	3	0.1%	652	0.8%
Lung Condition	64	2.0%	1,150	1.6%	12	0.3%	1,226	1.6%
Mental Health Cond	405	12.7%	6,041	8.4%	23	0.7%	6,469	8.2%
Stroke	28	0.9%	665	0.9%	5	0.1%	698	0.9%
Other	250	7.8%	5,949	8.3%	30	0.9%	6,229	7.9%
None	1,341	42.1%	45,362	63.0%	176	5.1%	46,879	59.6%
Not Stated	863	27.1%	5,276	7.3%	3,155	90.8%	9,294	11.8%

First Nations
982
31%

Non Indigenous
21,422
30%

Not Stated
144
4%

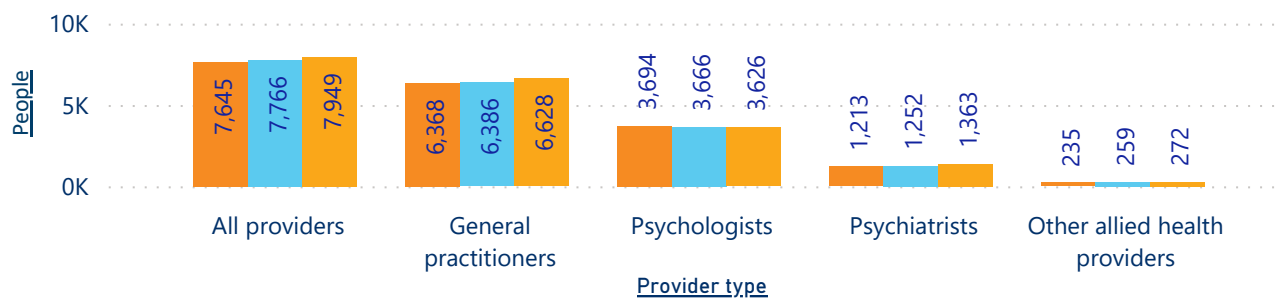
People with 1 or more health conditions

Note not additive across health conditions as people could multi select these in the census

Mental health₄

People receiving Medicare-subsidised mental health-specific services

Fin Yr ● 2018-19 ● 2019-20 ● 2020-21



Total services delivered

Fin Yr	#
2018-19	35,487
2019-20	35,137
2020-21	37,402

Death - Top 3 causes of death₅

Crude rate per 100,000

1. Coronary heart disease(64.1)
2. Cerebrovascular disease(35.8)
3. Lung cancer(31.9)

SOURCES: 1 ABS 2021 Census, Datapacks, retrieved 01/12/22, <www.abs.gov.au/census/find-census-data/datapacks>, 2 Queensland Government Statistician's Office, Regional Database, retrieved 5/12/22, <www.qgso.qld.au> | 3 Australian Early Developmental Census, Data, retrieved 5/12/22, <www.aedc.gov.au/early-childhood> | 4 AIHW, Medicare-subsidised mental health specific services, retrieved 5/12/22, <www.aihw.gov.au/mental-health/topic-areas/medicare-subsidised-services> | 5 AIHW, MORT Death data 2016-20, retrieved 10/10/22, <www.aihw.gov.au>

Note -The ABS data captured in this report presents people as Male or Female, despite the census allowing for non-binary responses. Further information in how this was collected in the census and consequently provided can be found at www.abs.gov.au/articles/non-binary-sex-2021-census