

# Mt Gravatt

SA3 Population Health  
Snapshot 2023

79,371



## Demographics<sub>1</sub>

people living in this region in 2021

79 km<sup>2</sup>

Age	First Nations		Non Indigenous		Not Stated		Total
	Count	% of Age group	Count	% of Age group	Count	% of Age group	
0-4	96	2.2%	4,219	95.3%	110	2.5%	4,425
5-14	223	2.1%	10,057	95.6%	240	2.3%	10,520
15-24	254	2.3%	10,402	94.1%	396	3.6%	11,052
25-44	264	1.1%	23,491	95.6%	827	3.4%	24,582
45-64	205	1.2%	17,107	96.2%	467	2.6%	17,779
65+	54	0.5%	10,617	96.4%	342	3.1%	11,013
<b>Total pop</b>	<b>1,096</b>	<b>1.4%</b>	<b>75,893</b>	<b>95.6%</b>	<b>2,382</b>	<b>3.0%</b>	

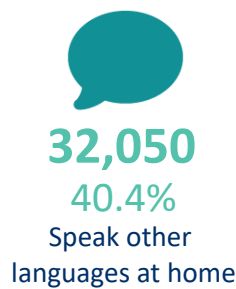
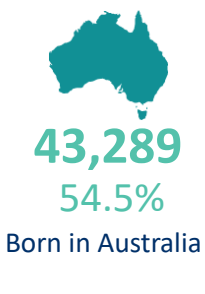
**Male**  
38,877 49.0%

**Female**  
40,492 51.0%

(Approximates)

## Priority Populations<sub>1</sub>

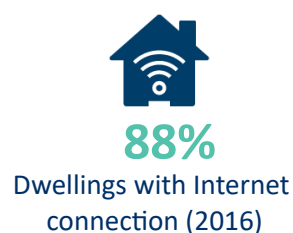
### Top 5 Ancestries



Ancestry	Count
English	19,533
Australian	17,435
Chinese	15,463
Irish	6,406
Scottish	5,406



## Social determinants<sub>2,1</sub>



Education	Eligible respondents	% respondents
Didn't go to school	558	1%
Yr10 or below	11,876	19%
Yr11/equiv	3,130	5%
Yr12/equiv	45,890	75%

Higher education	Eligible respondents	% respondents
Cert I/II/nfd	1,603	4%
Cert III/IV	7,367	19%
Advanced Diploma/Diploma	6,277	16%
Grad Diploma/Certificate	1,842	5%
Bachelor Degree	15,854	40%
Post Grad Degree	6,672	17%

## Medians (middle of the group)<sub>1</sub>

**36yrs**  
Age

**\$813**  
Weekly personal  
income

**\$2,226**  
Weekly family  
income

**\$2,005**  
Weekly household  
income

**\$2,100**  
Monthly  
mortgage  
repayments

**\$420**  
Weekly rent

# Mt Gravatt

SA3 Population Health  
Snapshot 2023

**79,371**  
people living in this region in 2021



## Vulnerable children<sub>3</sub>

Australian Early Developmental Census

**52%**

children developmentally on track

**11%**

children vulnerable in 2 or more domains

**8%**

children vulnerable: physical health & wellbeing domain

**7%**

children vulnerable: language & cognitive skills domain

**9%**

children vulnerable: social competence domain

## Self-reported long term health conditions<sub>1</sub>

First Nations  
**427**  
**39%**

Non Indigenous  
**21,191**  
**28%**

Not Stated  
**84**  
**4%**

People with 1 or more health conditions

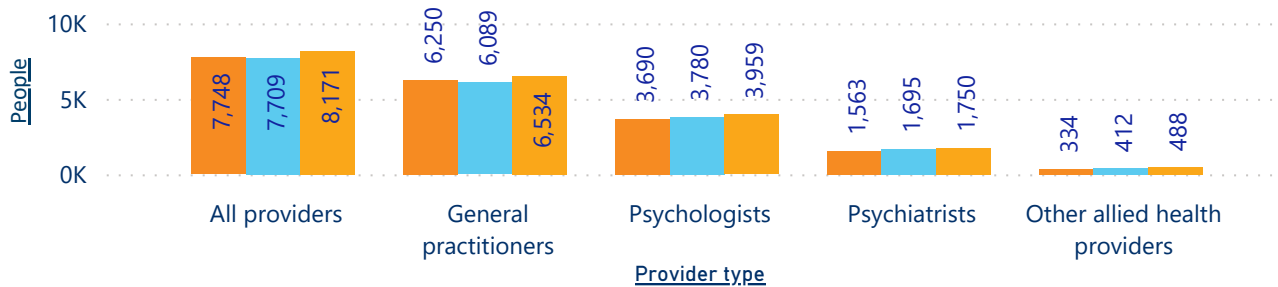
Health Condition	First Nations		Non Indigenous		Not Stated		Total	
	Count	%	Count	%	Count	%	Count	%
Arthritis	67	6.1%	4,604	6.1%	34	1.4%	<b>4,705</b>	<b>5.9%</b>
Asthma	168	15.3%	5,225	6.9%	17	0.7%	<b>5,410</b>	<b>6.8%</b>
Cancer	16	1.5%	1,852	2.4%	5	0.2%	<b>1,873</b>	<b>2.4%</b>
Dementia	0	0.0%	569	0.7%	9	0.4%	<b>578</b>	<b>0.7%</b>
Diabetes	72	6.6%	3,086	4.1%	18	0.8%	<b>3,176</b>	<b>4.0%</b>
Heart Disease	41	3.7%	2,588	3.4%	16	0.7%	<b>2,645</b>	<b>3.3%</b>
Kidney Disease	11	1.0%	521	0.7%	14	0.6%	<b>546</b>	<b>0.7%</b>
Lung Condition	25	2.3%	933	1.2%	16	0.7%	<b>974</b>	<b>1.2%</b>
Mental Health Cond	181	16.5%	5,499	7.2%	22	0.9%	<b>5,702</b>	<b>7.2%</b>
Stroke	13	1.2%	520	0.7%	7	0.3%	<b>540</b>	<b>0.7%</b>
Other	100	9.1%	6,187	8.2%	23	1.0%	<b>6,310</b>	<b>8.0%</b>
None	600	54.7%	52,469	69.1%	99	4.2%	<b>53,168</b>	<b>67.0%</b>
Not Stated	69	6.3%	2,233	2.9%	2,199	92.3%	<b>4,501</b>	<b>5.7%</b>

Note not additive across health conditions as people could multi select these in the census

## Mental health<sub>4</sub>

### People receiving Medicare-subsidised mental health-specific services

Fin Yr ● 2018-19 ● 2019-20 ● 2020-21



Total services delivered

Fin Yr	#
2018-19	40,389
2019-20	41,210
2020-21	44,170

## Death - Top 3 causes of death<sub>5</sub>

Crude rate per 100,000

1. Coronary heart disease(77.7) 2. Dementia(55.3) 3. Cerebrovascular disease(42.2)

SOURCES: 1 ABS 2021 Census, Datapacks, retrieved 01/12/22, <www.abs.gov.au/census/find-census-data/datapacks>, 2 Queensland Government Statistician's Office, Regional Database, retrieved 5/12/22, <www.qgso.qld.au> | 3 Australian Early Developmental Census, Data, retrieved 5/12/22, <www.aedc.gov.au/early-childhood> | 4 AIHW, Medicare-subsidised mental health specific services, retrieved 5/12/22, <www.aihw.gov.au/mental-health/topic-areas/medicare-subsidised-services> | 5 AIHW, MORT Death data 2016-20, retrieved 10/10/22, <www.aihw.gov.au>

Note -The ABS data captured in this report presents people as Male or Female, despite the census allowing for non-binary responses. Further information in how this was collected in the census and consequently provided can be found at [www.abs.gov.au/articles/non-binary-sex-2021-census](http://www.abs.gov.au/articles/non-binary-sex-2021-census)