

Nathan

SA3 Population Health
Snapshot 2023

39,901



Demographics₁

people living in this region in 2021

25 km²

Age	First Nations		Non Indigenous		Not Stated		Total
	Count	% of Age group	Count	% of Age group	Count	% of Age group	
0-4	66	2.8%	2,280	95.2%	49	2.0%	2,395
5-14	142	2.9%	4,688	94.7%	118	2.4%	4,948
15-24	153	2.9%	4,871	93.2%	203	3.9%	5,227
25-44	206	1.6%	12,388	95.1%	437	3.4%	13,031
45-64	137	1.5%	8,734	95.6%	263	2.9%	9,134
65+	40	0.8%	4,969	96.2%	157	3.0%	5,166
Total pop	744	1.9%	37,930	95.1%	1,227	3.1%	

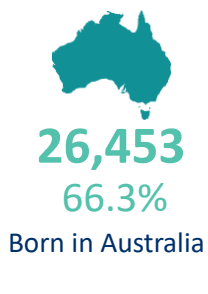
Male
19,949 50.0%

Female
19,965 50.0%

(Approximates)

Priority Populations₁

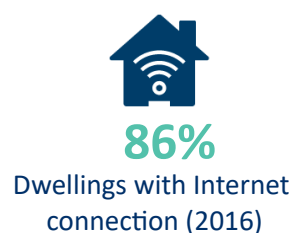
Top 5 Ancestries



Ancestry	Count
English	12,782
Australian	11,719
Irish	5,080
Scottish	4,121
Chinese	3,690



Social determinants_{2,1}



Education	Eligible respondents	% respondents
Didn't go to school	262	1%
Yr10 or below	5,820	19%
Yr11/equiv	1,500	5%
Yr12/equiv	23,543	76%

Higher education	Eligible respondents	% respondents
Cert I/II/nfd	760	4%
Cert III/IV	4,014	19%
Advanced Diploma/Diploma	2,985	14%
Grad Diploma/Certificate	1,268	6%
Bachelor Degree	8,309	40%
Post Grad Degree	3,482	17%

Medians (middle of the group)₁

36yrs
Age

\$904
Weekly personal
income

\$2,477
Weekly family
income

\$2,062
Weekly household
income

\$2,100
Monthly
mortgage
repayments

\$388
Weekly rent

Vulnerable children₃

Australian Early Developmental Census

58%

children developmentally on track

7%

children vulnerable in 2 or more domains

8%

children vulnerable: physical health & wellbeing domain

4%

children vulnerable: language & cognitive skills domain

7%

children vulnerable: social competence domain

Self-reported long term health conditions₁

Health Condition	First Nations		Non Indigenous		Not Stated		Total	
	Count	%	Count	%	Count	%	Count	%
Arthritis	38	5.1%	2,548	6.7%	16	1.3%	2,602	6.5%
Asthma	111	14.9%	3,054	8.1%	12	1.0%	3,177	8.0%
Cancer	18	2.4%	1,053	2.8%	4	0.3%	1,075	2.7%
Dementia	4	0.5%	195	0.5%	3	0.2%	202	0.5%
Diabetes	39	5.2%	1,396	3.7%	7	0.6%	1,442	3.6%
Heart Disease	29	3.9%	1,285	3.4%	8	0.7%	1,322	3.3%
Kidney Disease	10	1.3%	263	0.7%	7	0.6%	280	0.7%
Lung Condition	9	1.2%	483	1.3%	0	0.0%	492	1.2%
Mental Health Cond	125	16.8%	3,698	9.7%	14	1.1%	3,837	9.6%
Stroke	10	1.3%	279	0.7%	0	0.0%	289	0.7%
Other	99	13.3%	3,427	9.0%	7	0.6%	3,533	8.9%
None	398	53.5%	24,912	65.7%	46	3.7%	25,356	63.5%
Not Stated	46	6.2%	1,152	3.0%	1,144	93.2%	2,342	5.9%

First Nations
300
40%

Non Indigenous
11,866
31%

Not Stated
37
3%

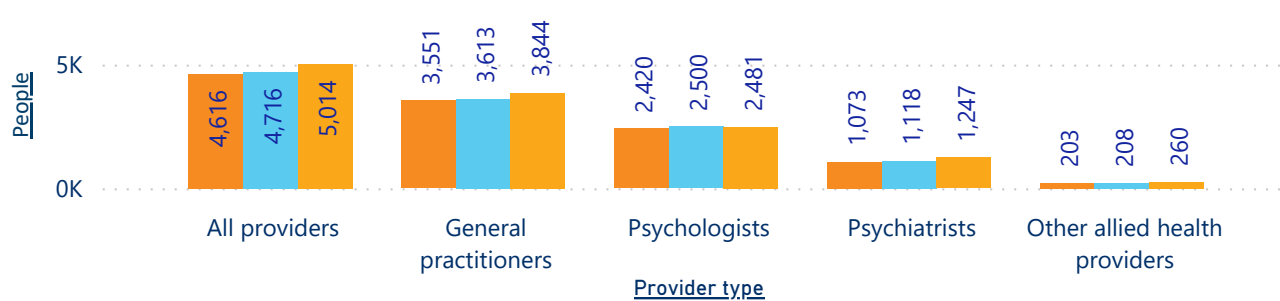
People with 1 or more health conditions

Note not additive across health conditions as people could multi select these in the census

Mental health₄

People receiving Medicare-subsidised mental health-specific services

Fin Yr ● 2018-19 ● 2019-20 ● 2020-21



Total services delivered

Fin Yr	#
2018-19	25,782
2019-20	26,727
2020-21	28,537

Death - Top 3 causes of death₅

Crude rate per 100,000

1. Coronary heart disease(59.8) 2. Dementia(39.3) 3. Lung cancer(25.9)

SOURCES: 1 ABS 2021 Census, Datapacks, retrieved 01/12/22, <www.abs.gov.au/census/find-census-data/datapacks>, 2 Queensland Government Statistician's Office, Regional Database, retrieved 5/12/22, <www.qgso.qld.au> | 3 Australian Early Developmental Census, Data, retrieved 5/12/22, <www.aedc.gov.au/early-childhood> | 4 AIHW, Medicare-subsidised mental health specific services, retrieved 5/12/22, <www.aihw.gov.au/mental-health/topic-areas/medicare-subsidised-services> | 5 AIHW, MORT Death data 2016-20, retrieved 10/10/22, <www.aihw.gov.au>

Note -The ABS data captured in this report presents people as Male or Female, despite the census allowing for non-binary responses. Further information in how this was collected in the census and consequently provided can be found at www.abs.gov.au/articles/non-binary-sex-2021-census